

Example Installations



Vincent Thomas Bridge: San Pedro, CA

Equipment: 1840 m long suspension bridge

Qualification: customized test criteria on component level

Solution: Enidine Friction / Viscous Damper (48 elements)

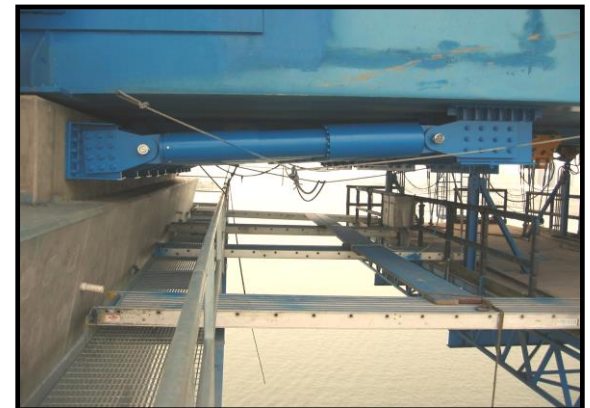


Coronado Bridge: San Diego, CA

Equipment: 3400 m long box girder bridge

Qualification: Customized test criteria on component level

Solution: (20) Enidine Viscous Damper 300 KIP X 18 inch stroke



Santiago Creek Overpass: San Diego, CA

Equipment: Slab bridge

Qualification: Customized test criteria on component level

Solution: (6) Nonlinear Fluid Viscous Damper - F_{\max} of 160kips and a total stroke of 30 inches.

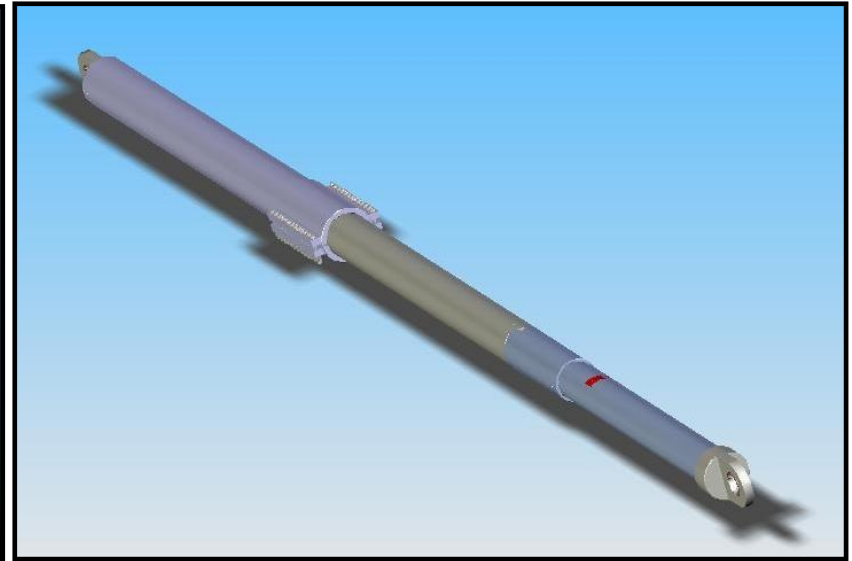


Yangluo Bridge - 阳逻大桥 – Wuhan, China

Equipment: Long-Span suspension bridge

Qualification: Customized test criteria on component level

Solution: (4) Nonlinear Fluid Viscous Dampers - F_{\max} of 1000KN and a total stroke of 2000MM.

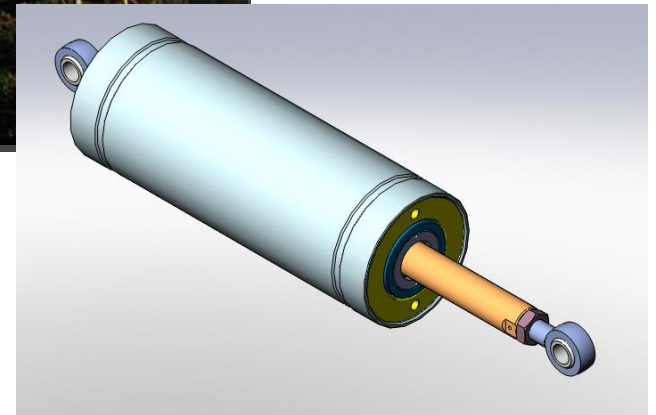


McKay Bridge: Halifax, Nova Scotia

Equipment: Suspension Bridge

Qualification: Customized test criteria on component level

Solution: (12) Linear Viscous Damper for Tuned Mass Damper - Power Dissipation 300 Watt continuous

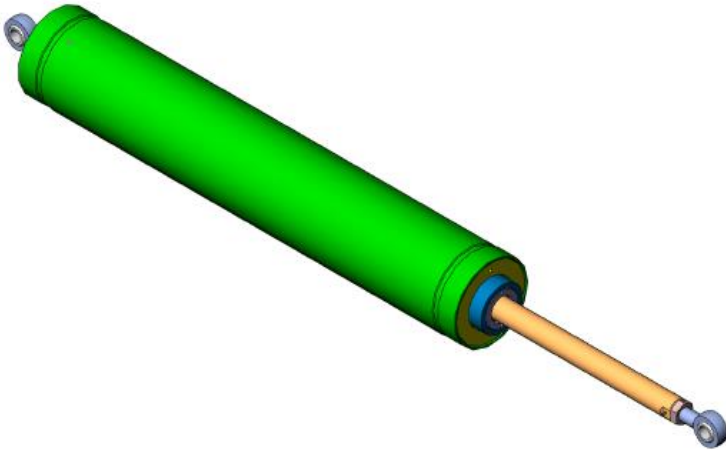


Shenzhen Bridge: Hong Kong, China

Equipment: Hybrid Cable Stay Design

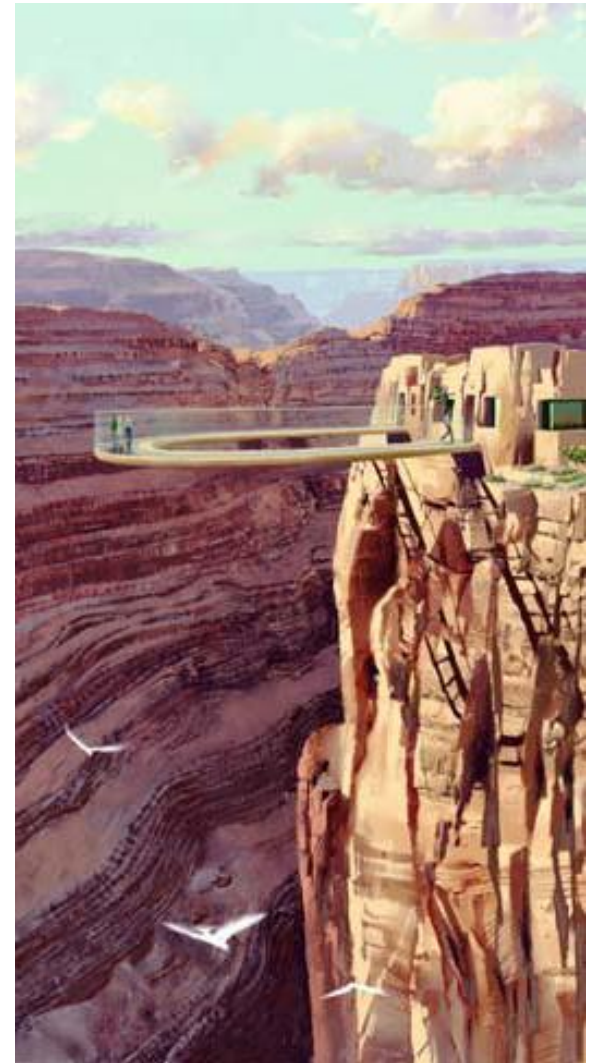
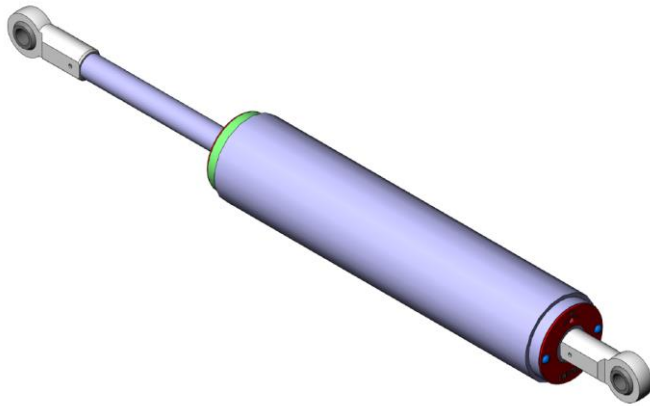
Qualification: Customized test criteria on component level

Solution: Linear Viscous Damper for Tuned Mass Damper - Power Dissipation 1000 Watts, 500mm Stroke



Grand Canyon Skywalk Grand Canyon

Solution: Enidine Friction Viscous Damper for Tuned Mass Damper - 10 inch stroke



Other Notable Installations

Exxon Mobil O&G Platform: Sakhalin Islands

Equipment: Oil-Gas Platform

Qualification: To Jointly Developed Requirements on Hydraulic Test Bench

Solution: Tuned Mass Elastomer Damper



Gerald Desmond Bridge: Long Beach, CA

Equipment: 1800m bridge, excitation by vehicles/wind/seismic events

Qualification: Customized test criteria on component level

Solution: 258 Enidine Hydraulic Shock Absorber 50 KIP X 6 inch stroke

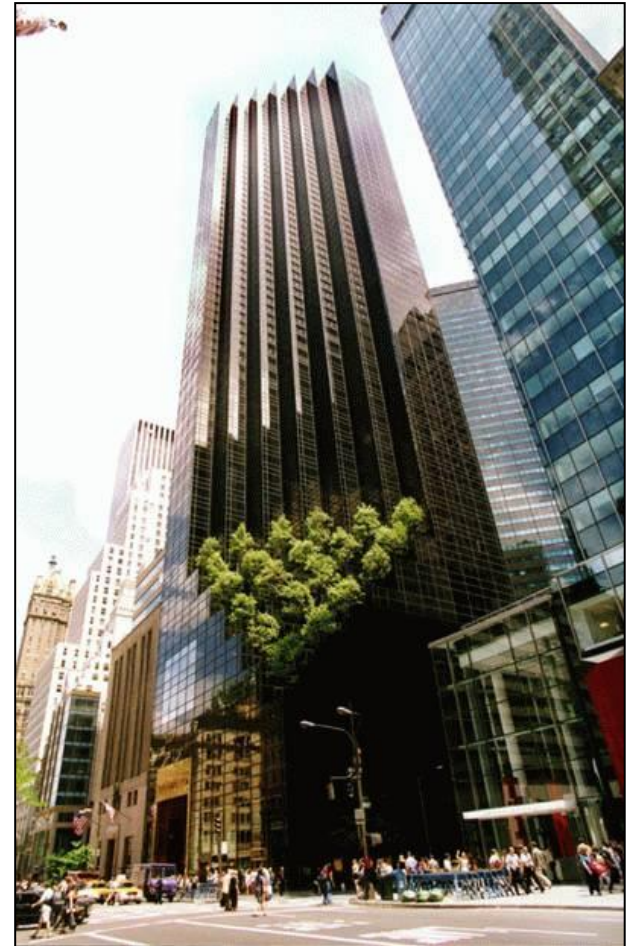


Trump Tower: New York, NY

Equipment: High-Rise Construction / Building application

Qualification: Customized test criteria on component level

Solution: (16) Friction Viscous Dampers for Tuned Mass Damper

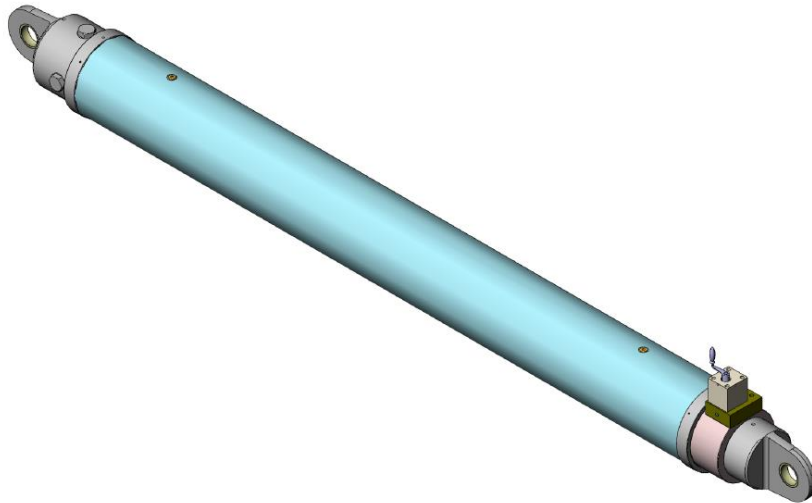


Bloomberg Tower: New York, NY

Equipment: High-Rise Construction / Building application

Qualification: Customized test criteria on component level

Solution: Friction Viscous Dampers for Tuned Mass Damper
Field Adjustable Damping



3-COM Building: Foster City, CA

Equipment: Construction / Building application

Qualification: Customized test criteria on component level

Solution: (63) Enidine Viscous Dampers 200 KIP X 4 inch stroke



Opera House: San Francisco, CA

Equipment: Construction / Building application

Qualification: Customized test criteria on component level

Solution: (16) Enidine Viscous Damper 400 KIP X 6 inch stroke



Retractable Stadium Roof-Tops

Dallas Cowboys



Indianapolis Colts



Phoenix Cardinals

